

READ THIS FIRST!

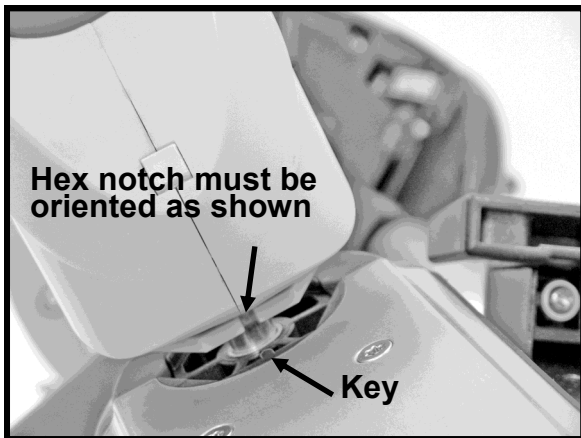
IVEA 600S Assembly Instructions

Tools required: None Estimated time: 5 minutes

IMPORTANT: Inspect device for any damage that may have occurred during shipment. If damage is found, **DO NOT** put device into service and contact your distributor listed on the packing slip.

IMPORTANT: Casters include left and right leg casters, marked L and R, with blue and yellow pedals, and two identical nose casters with overlapping blue pedals. If installed improperly, the SureTrek[®] tracking system will not work.

1) Remove all 4 casters and the IV Hooks box from the carton. Remove the IVEA from its plastic sleeve and position the collapsed device so that the undersides of the legs face upward.



2) Locate the leg caster marked "L" on the hex surface. Engage the brake by depressing the blue pedal. Partially insert the caster stem into the end socket of the **left** leg, which is on the same side as the oxygen tank hoop. Rotate the caster until the notch in the hex is positioned exactly as shown, directly in line with its mating "key." Push caster fully into place, making sure hex engages its socket. **Hex will not engage and SureTrek[®] tracking system will not work if notch is improperly oriented!**



3) Repeat Step 2 with the right leg caster (marked "R"), making certain the notch is oriented correctly and hex is fully engaged.

4) Engage the brake of a nose caster by depressing the blue pedal marked "ON." Insert the caster stem into a socket in the IVEA nose. Rotate the caster until the hex sides align with the socket, then push fully into place. **Note that nose casters do not have orientation notches.**

5) Repeat Step 4 with the second nose caster.



6) Release the brakes on all four casters by pulling up on the blue pedals. **Deploy the IVEA by carefully following the instructions on the reverse side of this sheet.** When all 4 casters are correctly installed, the deployed IVEA will rest stably on the floor. If not stable, check that all caster hexes are fully engaged in their mating sockets.

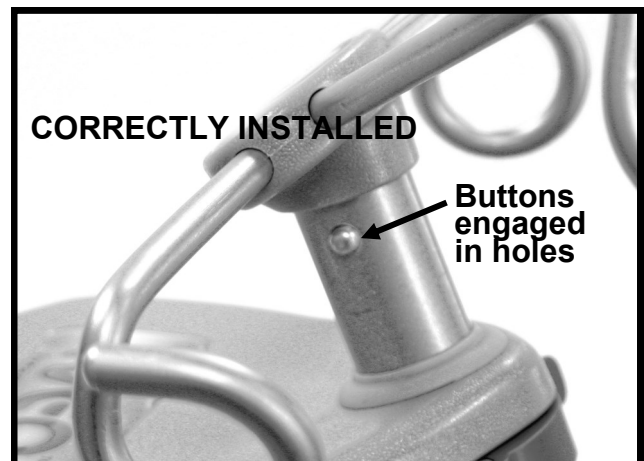
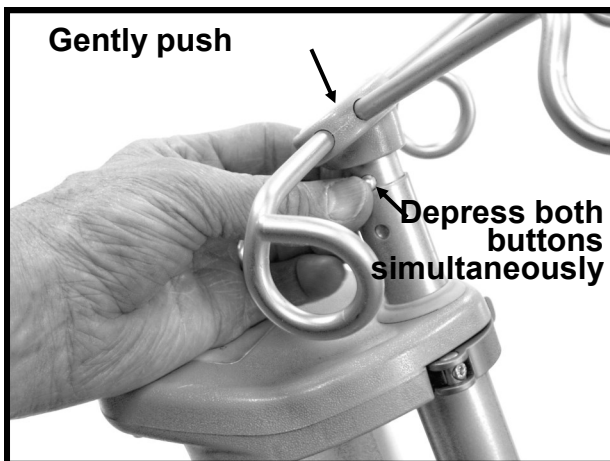
Instructions — Opening the IVEA

After casters are installed, deploy the IVEA as follows: Rest the collapsed unit on the floor. Lift up the top of the main column with one hand and lightly push down on the rear portion of one leg and then the other, with the other hand.



As the legs begin to drop away from the main column, the IVEA will open on its own. Gently lift the top of the main column and guide the IVEA until it "clicks" into a locked open position.

Once deployed, install the IV Hooks by fully depressing both spring buttons with thumb and forefinger while gently pushing downward into the IV Pole. **Be careful not to pinch fingers.** Both buttons should pop out in the IV Pole holes.



IMPORTANT! Refer to the IVEA 600S User Manual at www.iveamobility.com/using-the-ivea/product-resources/ for all instructions for use, warnings, and cautions. For technical support, please contact your distributor listed on the packing slip.